

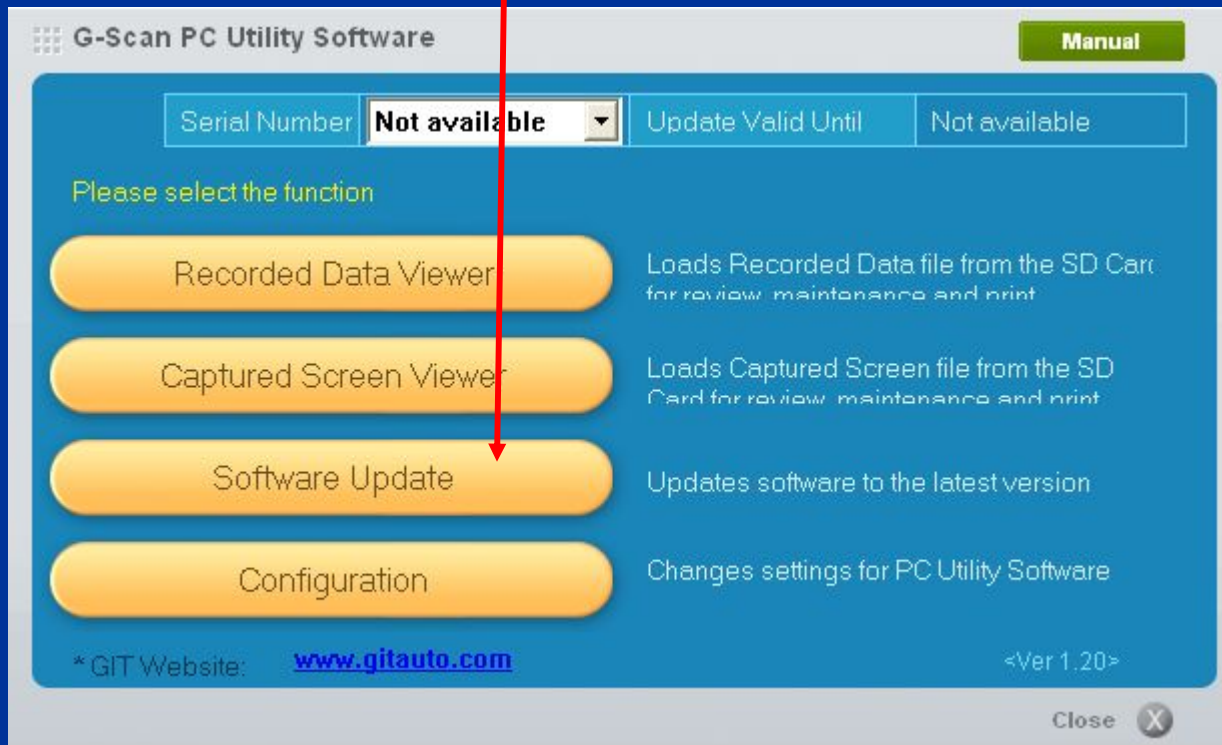
G-Scan Update Procedure

CAS of New England

For Technical Assistance call 1-877-263-4897 8:30am – 4:30pm EST

Install G-Scan PC Utility software

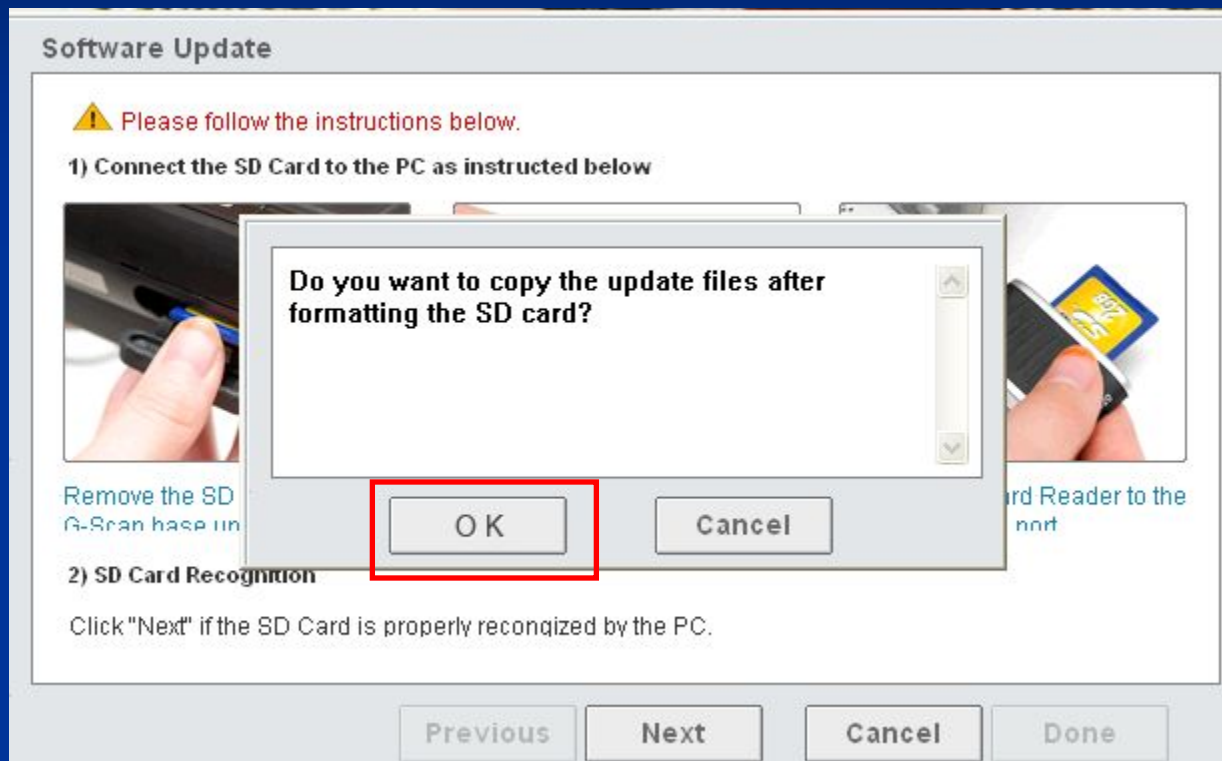
- After software is installed you should see the below user interface screen.
- Click on the [Software Update] Button



Shut off power to scan tool, remove software card from the bottom and install in the card reader. Insert into PC's USB port. Wait for PC to recognize and install USB Port hardware. When done Click [Next] on the PC screen.



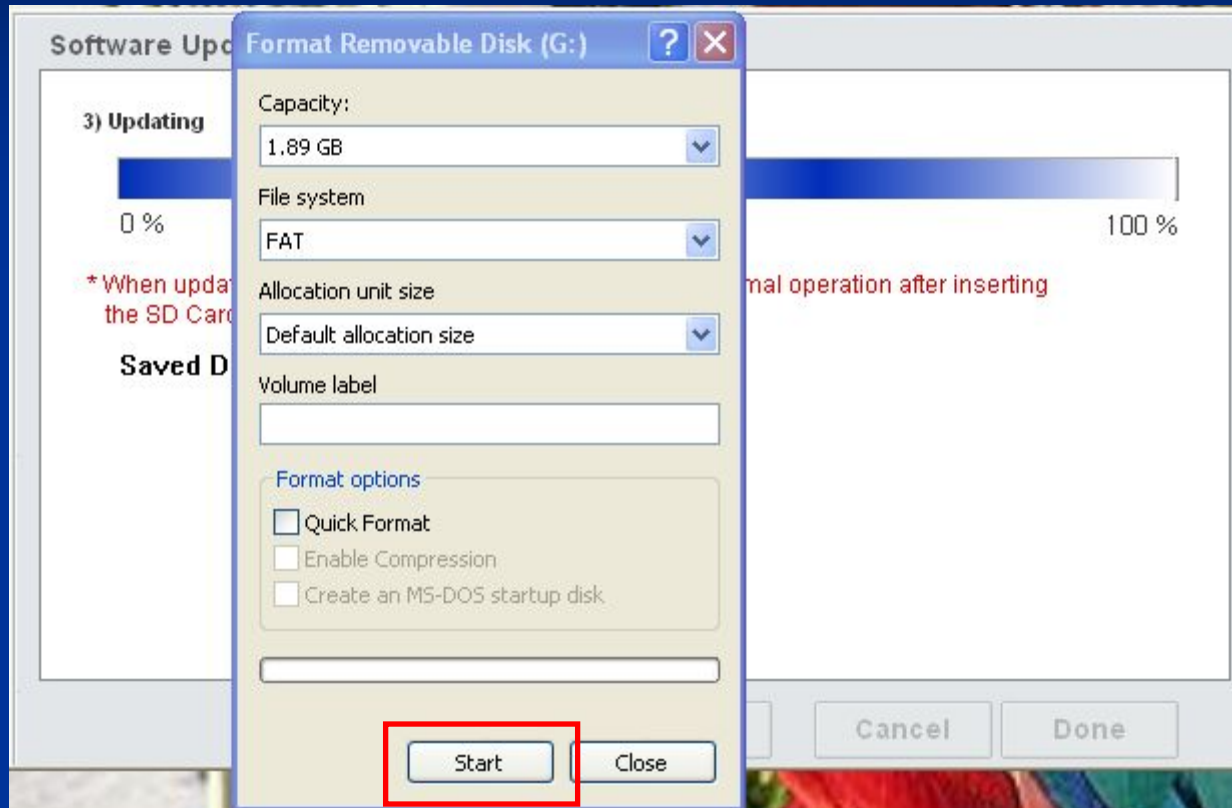
Click [OK] at the prompt.



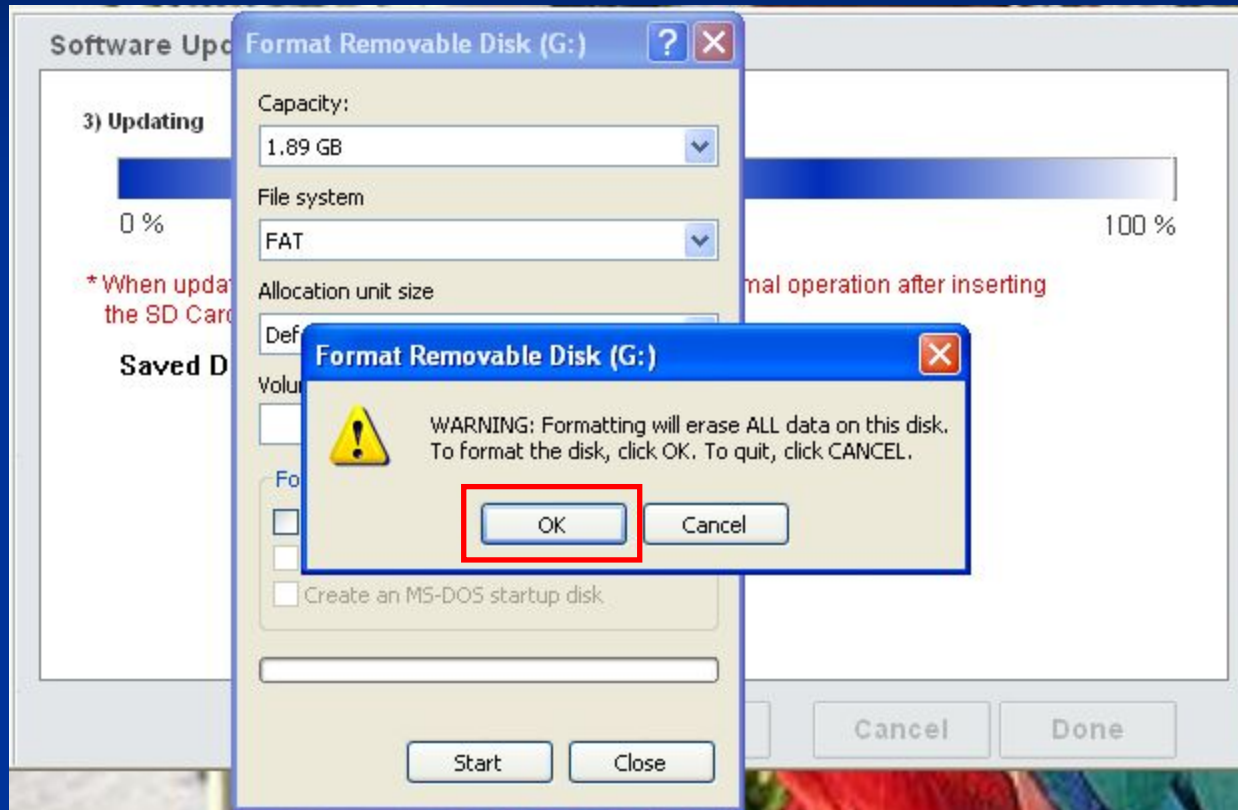
Click [OK] at the next prompt.



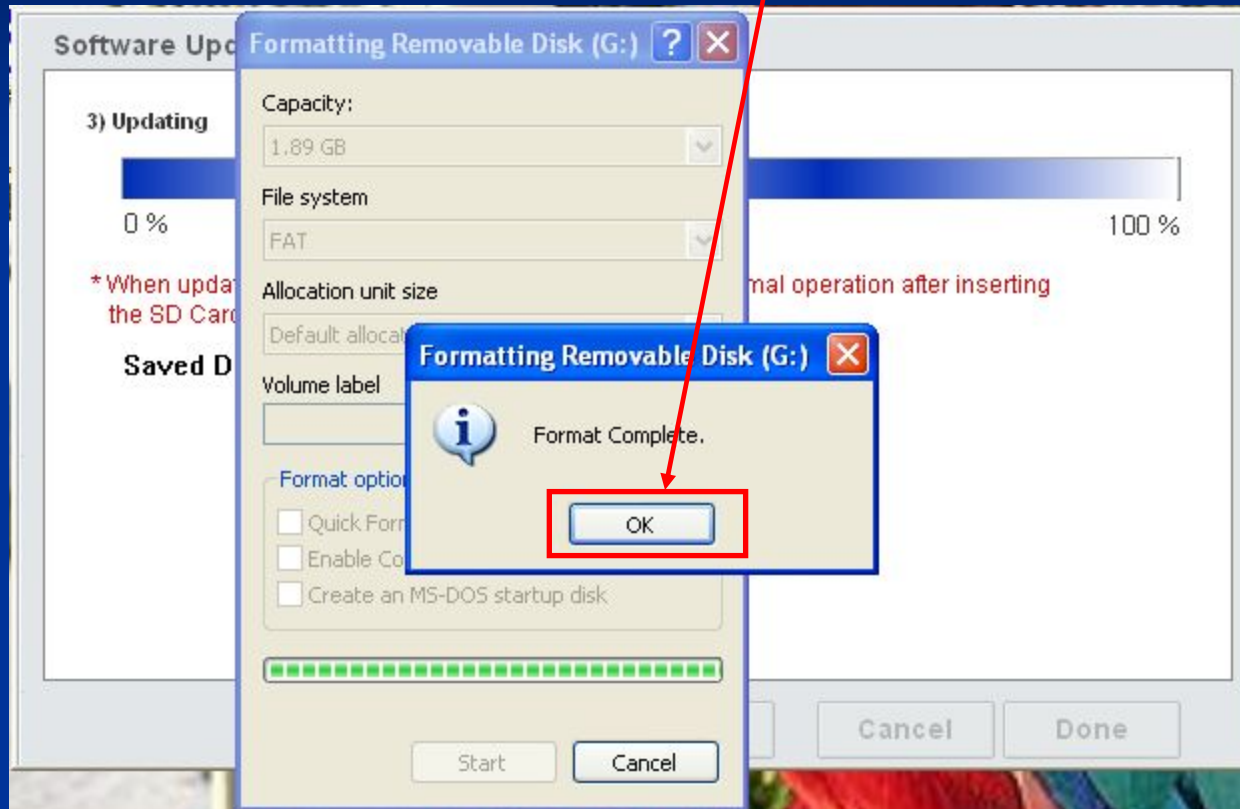
Check that the settings match as pictured and then click [Start]



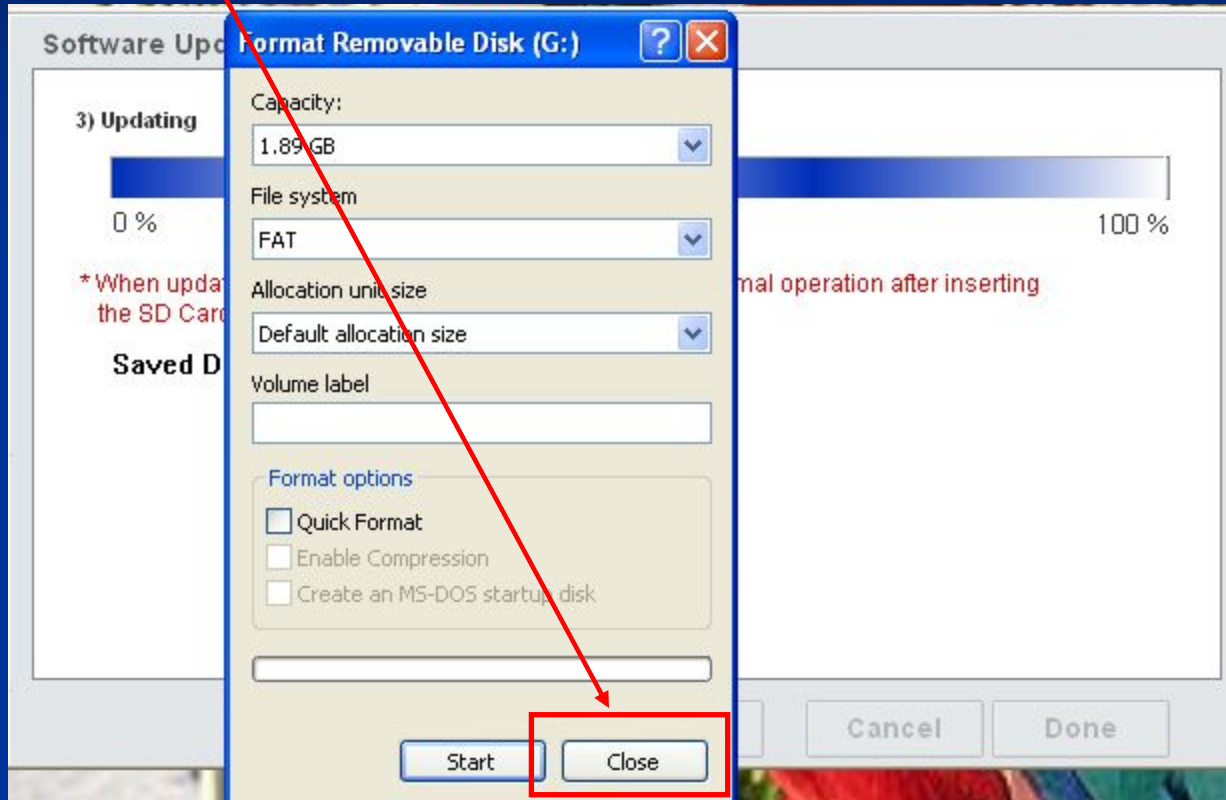
Click [OK] at the next prompt.



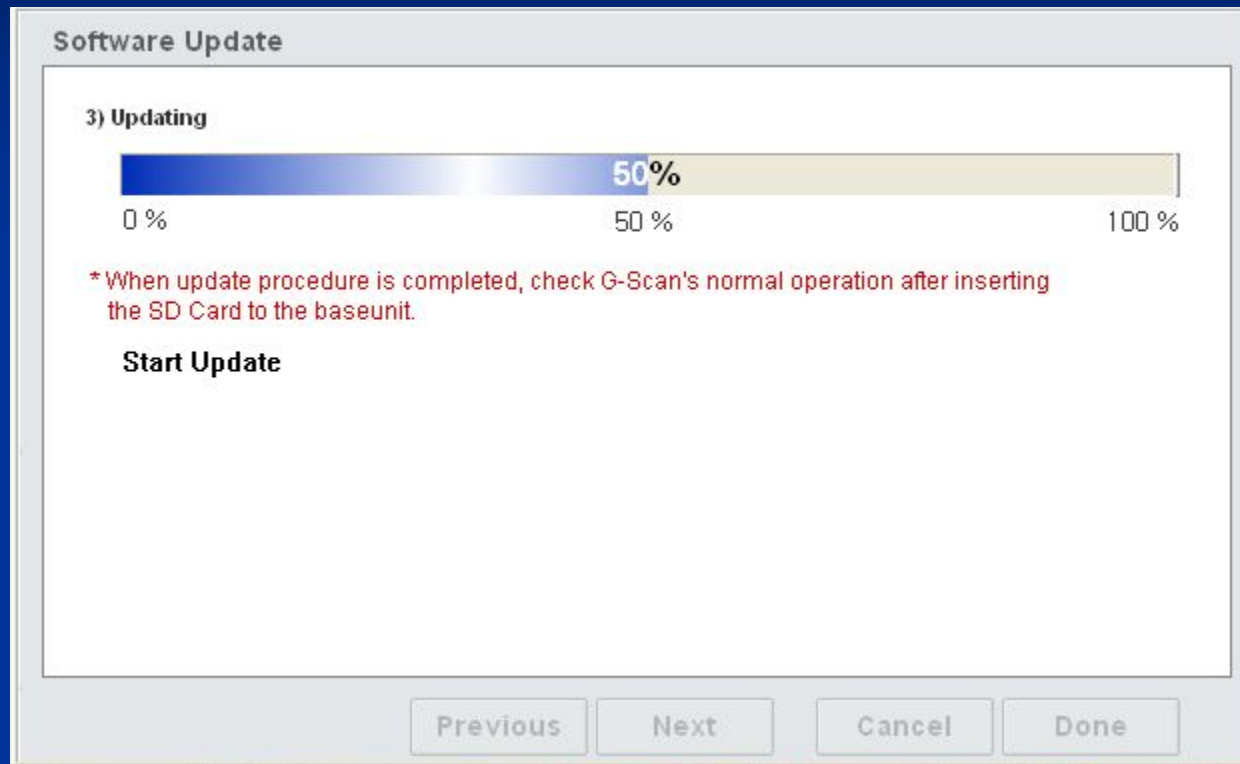
Click [OK].



Click [Close]. Update then starts automatically.

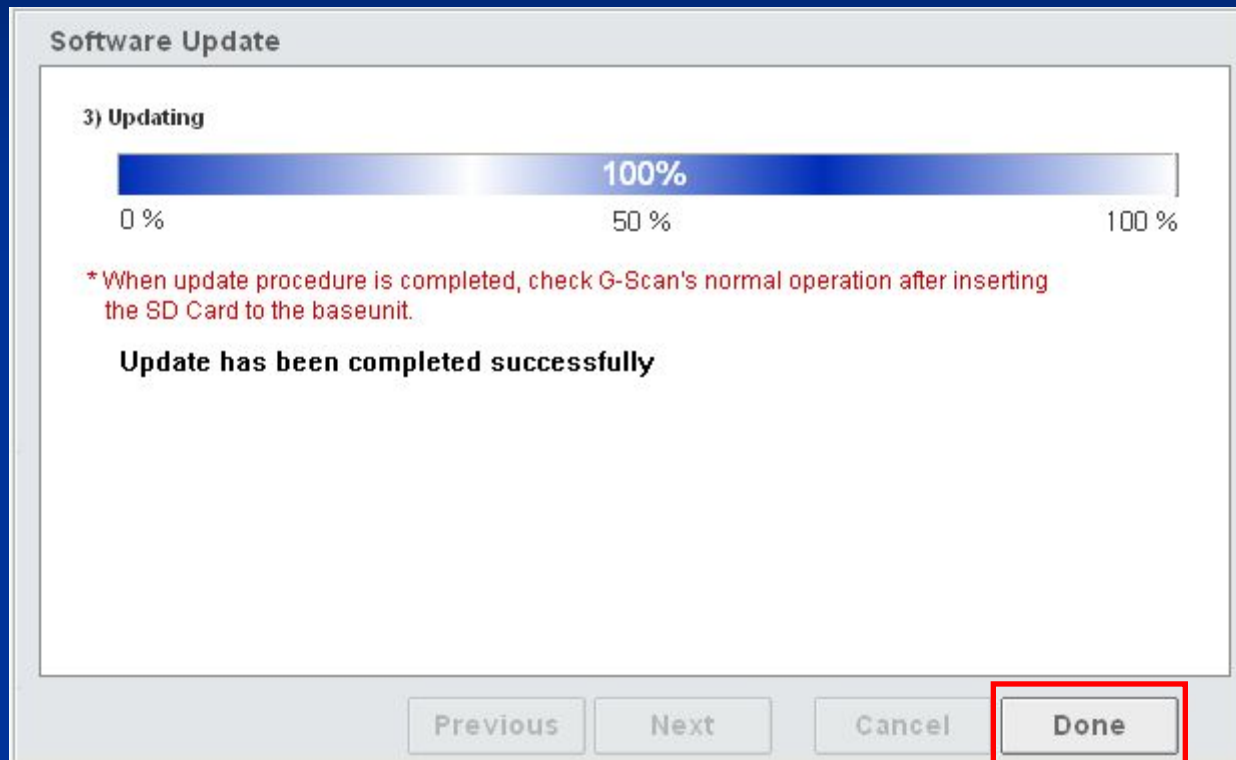


Software update progress bar.



Wait until Blue Bar completes the process. This may take as long 10 minutes. Do not interrupt, do not disconnect USB. It is suggested you do not use PC for any other operations during this download process!

Click [Done] when finished, then close the Update Program on your PC. Read below Warning...



WARNING: DO NOT disconnect SD card from USB interface if **RED** light is on. You must 1st click on the 'Safely Remove Hardware' icon on your PC Taskbar that allows you to 'eject' the device. Once Red light goes off it is safe to remove the SD Card.

Insert SD Card into the G-Scan. Power it up and the tool will auto update.

Software Update

 Please follow the instructions below.

1) Connect the SD Card to the PC as instructed below

Remove the SD Card from the G-Scan base unit while turned off

Insert the SD Card into the Card Reader

Connect the Card Reader to the PC by thru USB port

2) SD Card Recognition

Click "Next" if the SD Card is properly recongized by the PC.

CAS of New England
For Technical Assistance call 1-877-263-4897 8:30am – 4:30pm EST

G-Scan

Update Procedure

! End of Process !

CAS of New England

For Technical Assistance call 1-877-263-4897 8:30am – 4:30pm EST